

# 2014 news book

novelty collection





**Rock Table**

designer Jean Marie Massaud

REPORTAGE 2

TECHNICAL 68



**Flow Stool and Pouf**

designer Jean Marie Massaud

REPORTAGE 2

TECHNICAL 62



**Tense table**

designer Piergiorgio e Michele Cazzaniga

REPORTAGE 18

TECHNICAL 68



**Flow Chair and Slim**

designer Jean Marie Massaud

REPORTAGE 18

TECHNICAL 72



**Mia armchair and pouf**

designer Francesco Bettoni

REPORTAGE 26

TECHNICAL 74



**Grafo sofa system**

designer Victor Vasilev

REPORTAGE 34

TECHNICAL 78



**K Table**

designer Victor Vasilev

REPORTAGE 50

TECHNICAL 82



#### **Rock Table**

designer Jean Marie Massaud

A new timeless icon. A round table with a flowing, elegant silhouette which fully reveals the nature of what it represents: "a round table" that seems to float above a solid, inorganic base.

A mixture of natural and industrial materials that are blended to create a new product with a smooth design, following the same philosophy of Flow collection.

A refined solid object, light and stable, radical as well as sensual.

Rock Table is a collection of tables suited to both home and contract settings, available in different heights, sizes and finishes.



#### **Flow Stool and Pouf**

designer Jean Marie Massaud

A family of stools of great impact and comfort completing the Flow Collection.

Designed for home, office and community areas, they're available with a wide range of bases and finishes.



••• **Rock Table**

dinner area with Flow Slim armchairs, Random bookcases and a Rock Table with a white lacquered top.



 ROCK TABLE H73 0140





••• **Flow Chair**

restaurant area with a Rock Table and Flow Chairs  
on a VN 4-legged steel base.

 FLOW CHAIR H80.5 L56 D56  
 ROCK TABLE H73 Ø120



••• **Rock Table**

restaurant area with a Rock Table on a base in natural cement and with a top in white lacquer.

 ROCK TABLE H73 Ø120









••• Rock Table and Flow Stool

lounge bar area with a Flow Stool on a natural oak base and a Rock Table with a top in white lacquer.

ROCK TABLE H110 Ø80  
FLOW STOOL H78 D54 L54



#### **Tense**

designer Piergiorgio e Michele Cazzaniga

A mono-material table with a monochromatic finish. The important technological innovation it incorporates, combined with the tensioning capacity of the components, makes it possible to build tabletops in large sizes which remain perfectly flat and also extremely light.



#### **Flow Chair and Slim**

designer Jean Marie Massaud

The versatile family of the Flow seatings, designed by Jean Marie Massaud, offers a wide range of bases, shells, finishes, and upholsteries.

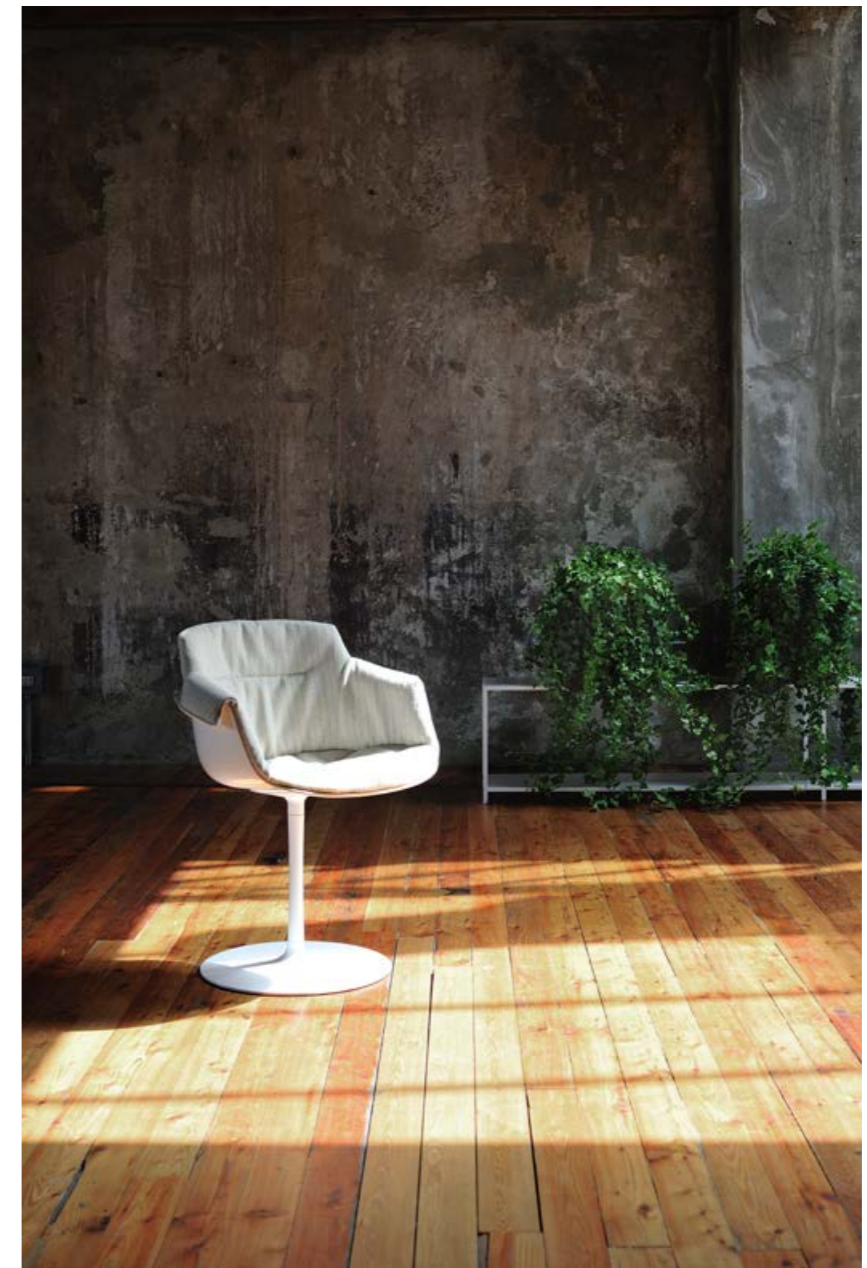


#### **Flow Pouf**

designer Jean Marie Massaud

A family of stools of great impact and comfort completing the Flow Collection. Designed for home, office and community areas, they're available with a wide range of bases and finishes.





••• **Flow Slim**

Flow Slim with a natural oak base or a central leg, white shell with XL padding in Monaco or Frank fabric.

 H76.4 D55





### **Mia armchair and pouf**

designer Francesco Bettoni

The Mia soft design comes from the simple gesture of folding a cushion to create a nest - a shelter for relaxing moments. Simple in the look, but versatile in the character, its contrasting trim underscores the form by highlighting its strong, but never aggressive personality.


"As you want me to be" is Mia spirit, designed to accommodate every kind of cover.

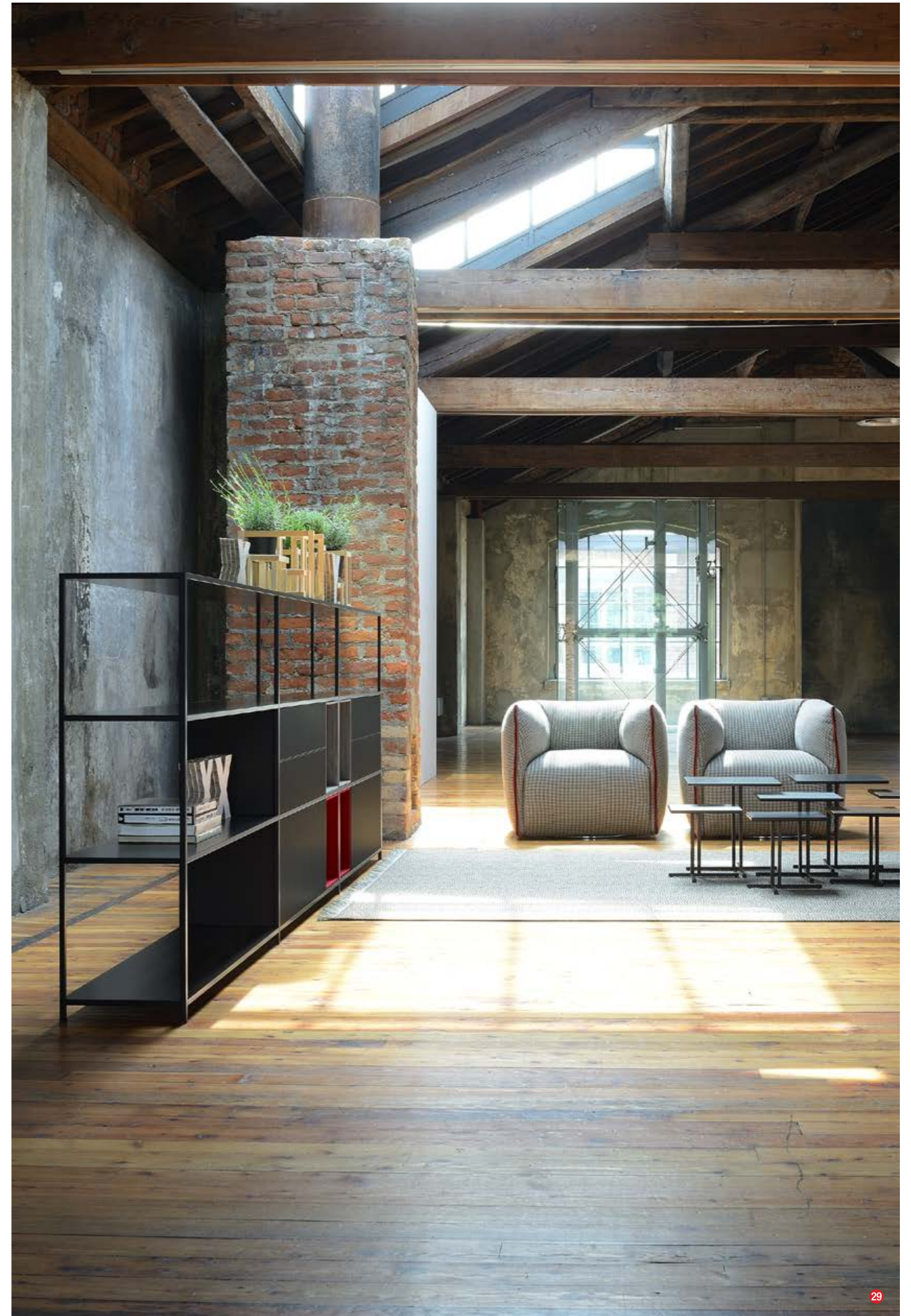
Thanks to the interplay of colours on the trims - from the tone-on-tone to the boldest contrast - Mia can suit one's very own taste and sensitivity, fitting into any setting. Glamour, minimalist, classic... but always contemporary.



••• Mia armchair

living area with a Mia armchair in Dune or William fabric.

 H61 L87 D83 SEAT H43 D55



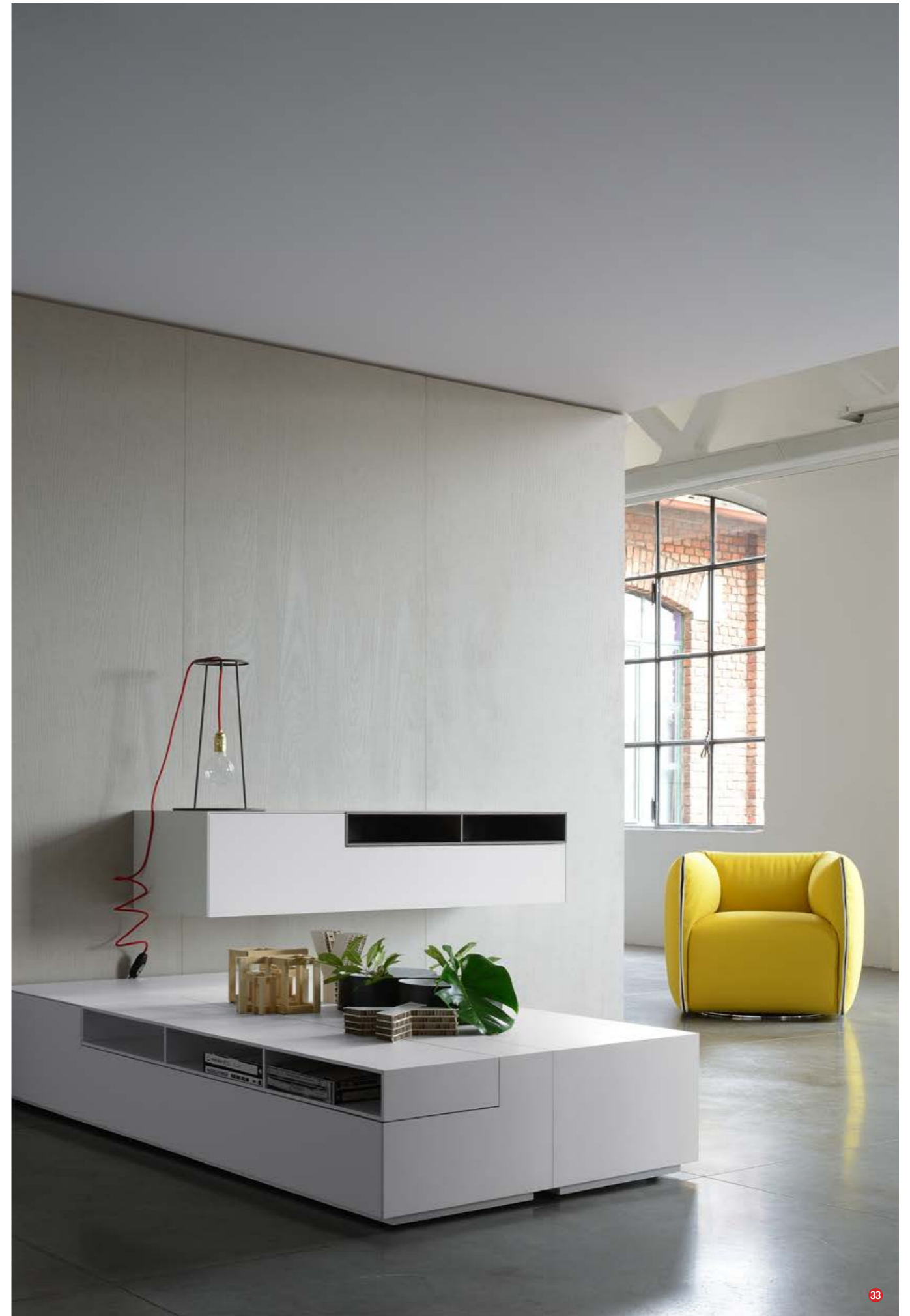




••• Mia armchair

a version in brown leather with the trim in beige  
Londra fabric.

⊠ H61 L87 D83 SEAT H43 D55





#### **Grafo sofa system**

designer Victor Vasilev

Grafo comes from the designer's desire to endow a soft object with the "identifying mark" of the iconic products of the MDF Italia collection.

A pure, straightforward graphic quality - part of the company's philosophy - has been the source of inspiration for the project.

With no daring pursuit at any cost, this modular system mixing upholstered and rigid elements, can be incorporated into any setting, from home to community areas.

The collection is made up of eight sectionals that together with three complementary coffee tables allow endless solutions to be developed in accordance to the free, creative interpretation of the customer.

Simple and flexible, spontaneous and timeless, dynamic and continuously evolving, Grafo system is fully able to change its form to meet the needs, moods and demands of each moment.

The graphic approach that inspired the project has resulted in the special contrasting stitching on the edges which underscores the proportions and the visual link among the various elements.

The folding backrest built into the module ensures a comfortable and space-saving seating.



••• Grafo sofa system

living area with a Grafo sofa in brown leather, cushions in Dune and William fabric, Minima 3.0 system in graphite grey lacquer, Flow pouf, K Table and Mia armchair.

H60/85 L300 D125







••• Grafo sofa system

four upholstered sectionals in Menfi fabric with anthracite grey stitching and coffee table modules in black fenix.

 H60/85 L325 D200







••• Grafo sofa system

living area with Grafo in Menfi fabric and a Rock Table with a smoked grey glass top.

GRAFO SOFA H60/85 L300 D275  
ROCK TABLE H71.5 Ø140





**K Table**

designer Victor Vasilev

A pleasant play of interconnecting low tables which creates an ironical collection.

With a simple design, K coffee tables can be included in any context and setting; as a single piece or grouped together, different configurations and compositions based on customers' creativity can be figured out.

The collection introduces a new concept of products and objects: it's no longer REcycling but UPcycling - a process that allows a quality product to be created by optimising resources, applying environmental ethics and creatively using valuable materials from production scraps.



••• Grafo and K Table

living area with Grafo sofa system, Rock Table, Minima 3.0, Mia armchair and K Tables in various dimensions and finishes.

K TABLE H30 W/L30, H35 W/L35, H40 W/L40  
GRAFO SOFA L400 D300



••• **MDF Italia**

MDF Italia is a steadily growing dynamic and innovative reality.

The environment and the life style represented by MDF Italia anticipates change and meets the request of a demanding cultured and cosmopolitan public.

Simplicity: a collection with a unique identity and unmistakable lines, characterized by a design based on the subtraction of what is not essential and capable of looking beyond.

Identity: MDF Italia represents the synthesis of innovation, tension, creativity, passion and emotion.

Innovation: in the processes, ideas, shapes, signs, materials, design, functions.

These are the distinguishing features of MDF Italia together with a high concept and design quality besides a streamlined system of production and an extensive distribution network in over 60 countries.

••• The MDF Italia design finds its source in the collaboration of its corporate project team with designers.

A unique style, expression of the interaction of new experiences, different skills, international views and unequalled signs.

Signs which have become icons in the world of design.

Since 2000 various designers have been working with MDF Italia; among others, Jean Marie Massaud, Xavier Lust, Francesco Bettoni, Piergiorgio Cazzaniga, Victor Vasilev, Neuland Industriedesign, Bruno Fattorini, Massimo Mariani, Jehs+Laub...

A design which distinguishes itself for its lightness, simplicity, innovation and a continuous search for new materials.

The goal is to make emotional discreet products, still stunning.

A team work which has been acknowledged and awarded several times: evidence of the success of its own design philosophy.



### ••• Rock Table

designer Jean Marie Massaud

The bases are made of UHPFRC (ultra-high performance fibre-reinforced cement) with cutting-edge technical/structural properties.

A fundamental characteristic of the components is mass colouration.

The finish and colour of the table bases is the result of a skilled mixture of sand and natural elements.

The subtle shades and the lack of uniformity in surface and colour are to be considered unique properties enhancing the value of the piece.

Each piece is different, each piece is original, and the colour of the quarry is guaranteed not to change, even if the piece is affected by abrasive, polluting or atmospheric agents.



TABLE H73 Ø140  
BASE H51 Ø50



TABLE H73 Ø120  
BASE H51 Ø50



TABLE H73 Ø100  
BASE H57 Ø34



TABLE H73 Ø80  
BASE H57 Ø34

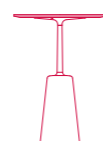


TABLE H110 Ø80  
BASE H57 Ø34

••• The tables are equipped with two types of bases:

- narrow (with outer dimension of 34cm at floor level) with 80 and 100cm large tabletops
- wide (with outer dimension of 50cm at floor level) with 120 and 140cm large tabletops.

Tabletop with bases in natural cement:

- MD-wood fibreboard in thickness 25mm with finished edge, in white matt lacquer with a scratch-proof finish (80, 100, 120, 140cm);

with bases in anthracite grey cement:

- MD-wood fibreboard in thickness 25mm with finished edge, matt grey lacquer with a scratch-proof finish (80, 100, 120, 140cm);
- smoked grey tempered glass in thickness 12mm (120, 140cm tabletops).






••• Rock Table

the coupling device between the base and the joining tube of the table is peculiar and represents a pleasant and technical/visual detail.

••• the components - the joining tube and the flange under the tabletop - are made of aluminium and are powder-coated with matt white or graphite grey lacquer.

 H73 Ø140, H110 Ø80, H73 Ø100, H73 Ø140





••• **Flow Stool** steel base  
designer Jean Marie Massaud

The bases are supplied in the following options:  
- sled base in steel wire, painted matt white, matt graphite, or chrome-plated.  
Seat heights available: 44, 65 and 78cm.

- LEM 4-legged base, in double-layer tubular steel with connecting elements in steel wire in matt white or matt graphite.  
Aluminium coupling device in the same colour.  
360° swivel. Seat height available: 44cm.

- VN 4-legged steel base, in folded sheet metal, painted matt white or graphite, with an aluminium coupling device in the same colour. 360° swivel.  
Seat height available: 44cm.

••• **Flow Stool/Pouf** oak base  
designer Jean Marie Massaud

The bases are supplied in the following options:  
- VN 4-legged oak base, frame from transparent-lacquered natural oak solid wood with a natural, brown or bleached finish, with a lacquered aluminium coupling device in matt white or graphite.  
Brushed stainless steel footrest on all versions.  
360° swivel.  
Seat heights available: 44, 65, 78cm (Flow Pouf 48cm).

- 4-legged oak base, frame from transparent-lacquered natural oak solid wood with a natural, brown or bleached finish, with a lacquered aluminium coupling device in matt white or matt graphite. 360° swivel.  
Seat height available: 48cm.



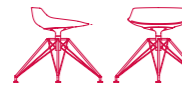
H44 D48 L52



H68 D48 L52



H78 D48 L52



H44 D65 L65



H44 D56 L56



H44 D56 L56



H65 D54 L54



H78 D54 L54



H48 LD6 L56 UPHOLSTERY 034



H48 D54 L54 UPHOLSTERY 034





••• **Flow Stool**

sled bases in steel wire, painted in matt white, matt graphite, or chrome-plated.

⊠ H44 D48 L52, H65 D48 L52, H78 D48 L52

••• VN 4-legged oak bases in natural, brown or bleached finish.

⊠ H44 D56, H65 D54, H78 D54



### ••• Flow Stool

the shell made from moulded polyurethane is in a goffered matt white or black finish. The polyurethane used, called TECH®, is a high-density structural material that provides great resistance to impact, scratches and aging.

LEM H44 D65, VN 4-LEGGED H44 D56

### ••• Flow Pouf

upholstered pouf, plywood frame covered with non-deformable polyurethane and polyester wadding. The upholstery, covering every part of the seat, is fully removable.

OAK BASE H48 D54, VN OAK BASE H48 D56





### ••• Tense table

designer Piergiorgio e Michele Cazzaniga

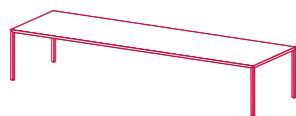
A table available in two versions:

- mono-material finish in matt white, made of acrylic resin and rock minerals. Tabletop, edges and legs covered with a 3mm thick sheet of resin

- monochromatic finish in matt black, red and turtledove acrylic resin and Morematt high-pressure stratified laminate of the latest generation.

Tabletop in stratified laminate with mass colouration; edges and legs in acrylic resin and rock minerals.

The 35mm thick tabletop is a load-bearing composite board built with an internal frame consisting of either aluminium profiles and polystyrene filler (mono-material version), or an acrylic resin honeycomb and two outer layers of aluminium (monochromatic version).



H73

W90 L160, 180, 200, 220, 240

W100 L200, 220, 240, 260, 280, 300

W120 L120, 240, 260, 280, 300, 360, 400

W150 L150, 200, 240, 300, 360, 400

TURTLEDOVE and RED max H73 W120 L300

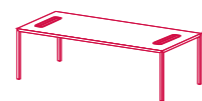
••• The table is also available in a version equipped with 1 or 2 openings and an undertop tray. The openings in size 350\* or 420mm are in aluminium.

A steel spring can be inserted into the predrilled holes (every 50cm) at the bottom of the undertop tray to group the cables on the floor together.

Finishes:

- matt white lacquer with tables in matt white

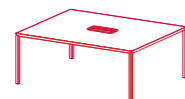
- matt black lacquer with tables in black, turtledove and red.



H73

W90\* L160, 180, 200, 220

W100\* L200, 220



H73

W150 L150, 200, 240

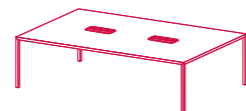


H73

W90 L240

W100 L240, 260, 280, 300

W120 L240, 260, 280, 300, 360, 400



H73

W120 L240, 260, 280, 300, 360, 400

W150 L300, 360, 400

TURTLEDOVE and RED max H73 W120 L300



••• Tense table

with the monochromatic version, there might be a slight difference in the tone between top and frame due to the variety of materials used: more matt for the top, and acrylic resin and rock minerals for the legs/edge.

BLACK max L400 W150 H73  
TURTLEDOVE and RED max L300 W120 H73





••• **Flow collection**

designer Jean Marie Massaud

Flow Chair and Flow Slim seatings can be completed with upholstery: a thermoformed padded countershell with a small pad made from quilted polyurethane and polyester wadding.

The new version Padded XL is available for the Flow Slim only.

XL padding is the natural development of the classical padding, consisting of a new quilting partially covering backrest and armrest. This gives a new look offering a great comfort.

••• **Upholstered PAD:** available both on Flow Chair and Flow Slim, made with polyurethane and polyester wadding, and with quilting that is thermally bonded to the fabric.

The bases are supplied in the same colour of the shell available for Flow Chair and Flow Slim.

Outdoor use: upon request, availability of outdoor versions with a 4-legged or a sled base in white, or graphite grey.

**SHELL**  
WHITE OR BLACK

**STEEL BASE**  
MATT WHITE, MATT GRAPHITE GREY OR CHROME\*  
\*ONLY 4-LEGGED AND SLED BASE

**BASE WITH CENTRAL LEG**  
GLOSS WHITE\*, MATT GRAPHITE GREY  
\*FLOW ARMCHAIR TEXTILE MATT WHITE

**OAK BASE**  
NATURAL, BROWN OR BLEACHED OAK



**FLOW CHAIR**

**FLOW SLIM**

**FLOW ARMCHAIR**



**4-LEGGED BASE**  
H80.5 D54 L53  
SEAT H44



**4-LEGGED BASE**  
H76.4 D53.1 L55  
SEAT H44



**CENTRAL LEG BASE**  
H78 D56 L60  
SEAT H46



**SLED BASE**  
H80.5 D54 L53  
SEAT H44



**SLED BASE**  
H76.4 D53.1 L55  
SEAT H44



**4-LEGGED OAK BASE**  
H78 D56 L60  
SEAT H46



**VN 4-LEGGED STEEL BASE**  
H80.5 D56 L56  
SEAT H44



**VN 4-LEGGED STEEL BASE**  
H76.4 D56 L56  
SEAT H44



**LEM 4-LEGGED BASE**  
H80.5 D65 L65  
SEAT H44



**LEM 4-LEGGED BASE**  
H76.4 D65 L65  
SEAT H44



**5-POINT STAR BASE, FIXED**  
H80.5 D67 L67  
SEAT H44



**5-POINT STAR BASE, FIXED**  
H76.4 D67 L67  
SEAT H44



**5-POINT STAR BASE ON CASTORS**  
H80.5 D67 L67 SEAT H41.2 / 51.2



**5-POINT STAR BASE ON CASTORS**  
H76.4 D67 L67 SEAT H41.2 / 51.2



**BASE WITH CENTRAL LEG**  
H80.5 D54 L53  
SEAT H44



**BASE WITH CENTRAL LEG**  
H76.4 D54 L55  
SEAT H44



**VN 4-LEGGED OAK BASE**  
H80.5 D56 L56  
SEAT H44



**VN 4-LEGGED OAK BASE**  
H76.4 D56 L56  
SEAT H44



**4-LEGGED OAK BASE**  
H80.5 D54.7 L54.7  
SEAT H44



**4-LEGGED OAK BASE**  
H76.4 D54.7 L55  
SEAT H44





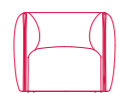
••• **Mia armchair and pouf**  
designer Francesco Bettoni

The supporting structure is made of solid wood and plywood with a base equipped with elastic belts; the filling is in variable density polyurethane foam, and the cover in polyester padding.

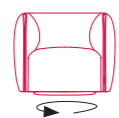
Available in a fixed version (with concealed feet), or with a 360° returning swivel base.

••• **Cover:** The collection is characterized by an extra-thick decorative trim which emphasizes its sinuosity by tracing its edges and intersections. The trim can be in the same tone of the cover, or in a contrast colour available in the following Londra fabric:

- Londra fabric:
- R058 Londra 01 (white)
- R304 Londra 05 (turtledove)
- R060 Londra 06 (brown)
- R062 Londra 08 (graphite)
- R063 Londra 09 (grey)
- R306 Londra 12 (green)
- R308 Londra 16 (blue)
- R310 Londra 20 (burgundy)
- R311 Londra 21 (red)



H61 L87 D83  
SEAT H43 D55



H61 L87 D83  
SEAT H43 D55 | 360°



H38 L64 D45



••• **Mia armchair and pouf**

completely upholstered (just like a skin) with an easily-removable cover thanks to an elegant zipper defining the shape of its armrests.

••• the trim can be in the same tone of the cover, or in a contrast colour based on then customers' choice.

ARMCHAIR H61 L87 D83 POUF H38 L64 D45







L/D/W/H

UPHOLSTERED ELEMENT	L75/100/125 D100 H60/85
BACKREST CUSHION	L75/100 D7 H40
ARMREST CUSHION	L75/100 D10 H25
ADDITIONAL CUSHIONS	L50 D10 H50, L60 D10 H60
COFFEE TABLE	L24.5/49.2/98.5 W98.5 H40

### ••• Grafo sofa system

designer Victor Vasilev

Sectionals: upholstered elements and coffee table modules.

All sectionals can be used individually or grouped together, as no exclusively end or intermediate elements are necessary; each sectional, indeed, can be used with simplicity and creativity to compose the sofa.

The special and easy coupling device system enables unlimited layouts to be figured out, from compact to linear or corner compositions, large islands, chaise longues and many others.

Coffee table modules can be added to create both decorative interruptions and useful service elements.

••• Structure upholstered sectionals: the supporting structure is made of solid wood and plywood with a base equipped with elastic belts and concealed feet. The filling is in variable density polyurethane foam, and the cover in polyester padding (with down in the seat cushions).

Cover: the contrasting graphic stitching that distinguishes and identifies the Grafo collection is the mark on all the upholstered sectionals and the cushions. Available in white, medium grey and anthracite, the stitching can be freely selected by the customer.

Coffee table modules: made of a loadbearing structural MD- fibreboard panel and aluminium in thickness 15mm, in matt white or black Fenix®. Legs are made of cast aluminium with section 15x15mm, powder-coated in matt white or graphite.

H/D/L



H60/85 D100 L275



H60/85 D100 L300



H60/85 D175 L300



H60/85 D225 L300



H60/85 D225 L300



••• Grafo sofa system

all backrest elements are equipped with a special "folding" system, enabling the height of the backrest to be adjusted, which subsequently modifies the seat depth. In this way, the system can meet any needs and comfort requirements.

••• the Grafo system is completed by a wide range of cushions.

For a full seat comfort, an upholstered sectional must be matched with a "backrest cushion" (40x75cm or 40x100cm), the armrest cushion (25x75, 25x100cm) can be used with the sectionals with no armrest or backrest, as well as with coffee table modules.

To complete the sofa visually and to add extra comfort, additional cushions (50x50cm and 60x60cm) can be included as smooth, stylistically decorative elements.





••• **K Table**

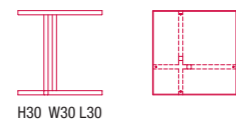
designer *Victor Vasilev*

The K Table collection uses parts of porcelainised grès obtained from the manufacture of other MDF Italia products.

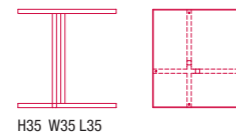
This valued material would otherwise be discarded.

Frame in steel with section 15x15mm, painted in matt white or graphite. Feet in rigid nylon.

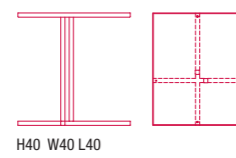
Tabletop: built-in non-removable tabletops in porcelainised grès in the gloss or satin-coated variants: white, medium grey and anthracite, as well as the special Corten matt version. (thickness: 6mm).



H30 W30 L30



H35 W35 L35



H40 W40 L40



••• Dune

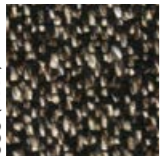
50%CO 33%VI 17%LI  
H140cm | 960 g/lm  
pilling 4/5 | martindale 35.000 | lightfastness 5



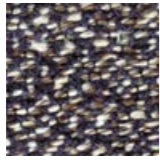
103 (R364)



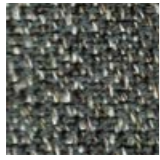
039 (R361)



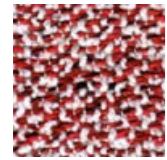
010 (R358)



050 (R363)



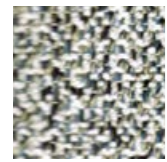
000 (R357)



035 (R360)



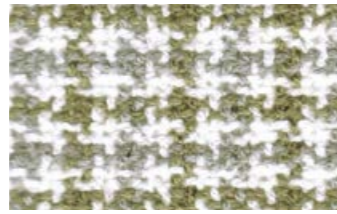
043 (R362)



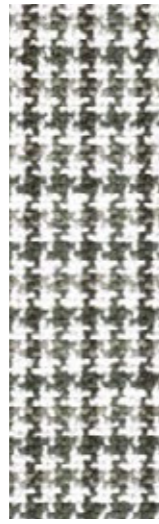
034 (R359)

••• William

56%CO 30%VI 14%LI  
H140cm | 900 g/lm | pilling 3/4  
martindale 36.000 | lightfastness 4/5



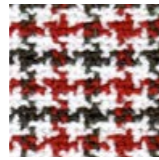
080 (R375)



091 (R376)



005 (R372)



051 (R373)



072 (R374)



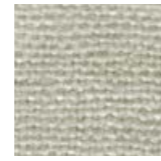
004 (R371)

••• Menfi

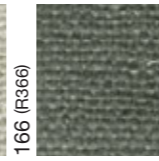
90%LI 10%PA  
H140cm | 1.200 g/lm  
pilling 4/5 | martindale 30.000 | lightfastness 4/5



001 (R365)



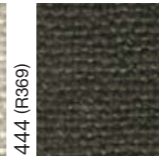
166 (R366)



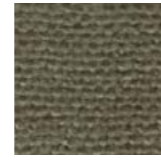
168 (R367)



444 (R369)



443 (R368)



445 (R370)

••• Frank

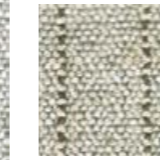
52% CO 20% VI 18% WO 10%LI  
H140cm | 650 g/lm  
pilling 3/4 | martindale 30.000 | lightfastness 4/5



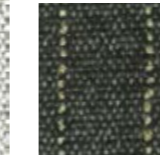
011 (R354)



003 (R352)



010 (R353)



020 (R355)



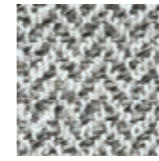
041 (R356)

••• Monaco

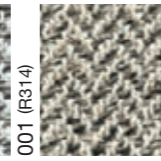
50% CO 17% LI 33% VI  
H140cm | 950 g/lm  
pilling 3/4 | martindale 35.000 | lightfastness 4/5



000 (R313)



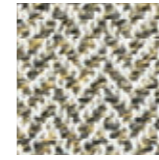
001 (R314)



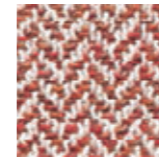
040 (R319)



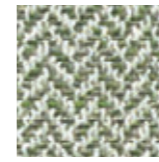
060 (R320)



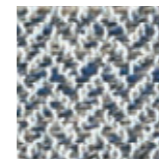
014 (R318)



007 (R315)



011 (R317)



010 (R316)

••• Londra

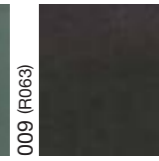
100% PU-BACKING 100% PL  
H137cm | 620 g/lm  
martindale > 200.000 | lightfastness 5/6



002 (R059)



009 (R063)



008 (R062)



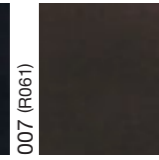
020 (R310)



019 (R309)



007 (R061)



006 (R060)



021 (R311)



023 (R312)



012 (R306)



011 (R305)



016 (R308)



015 (R307)



005 (R304)



001 (R058)

••• Ely

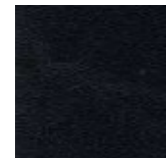
47%PL 53%PU  
H130cm | 644 g/lm  
martindale 25.600 | lightfastness 4/5



off white (R330)



taupe (R332)



black (R331)

••• York

19,5%CO 26,3% PL 54,2%PU  
H140cm | 616 g/lm  
martindale 51.200 | lightfastness 4/5



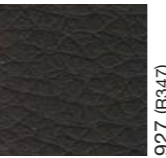
900 (R333)



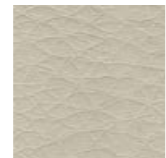
910 (R339)



909 (R338)



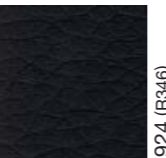
927 (R347)



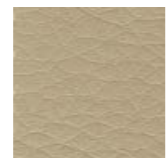
903 (R335)



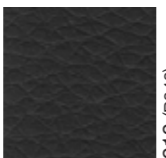
914 (R341)



924 (R346)



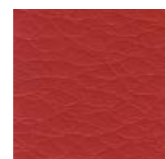
901 (R334)



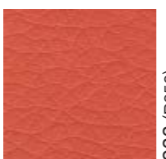
919 (R343)



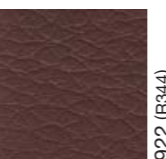
923 (R345)



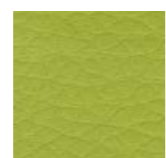
913 (R340)



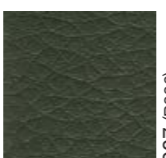
933 (R350)



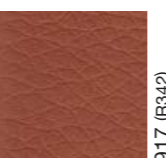
922 (R344)



931 (R349)



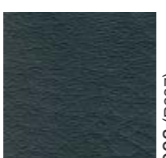
907 (R336)



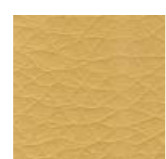
917 (R342)



929 (R348)



908 (R337)



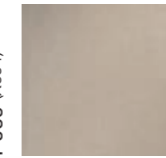
935 (R351)

••• Ceramic

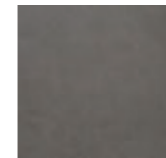
Top quality ceramics, defined as porcelainized grès, resulting from a cutting-edge technology with all due respect for nature. Manufactured in Italy through a protected process covered by international patents. Material composed of an accurate selection of the best raw materials, atomized quartz, feldspar, clay and noble kaolin mixture, pressed at 600kg/cm2 and sintered at a temperature of 1300°C. The final plates are defined "full body" and their veins on the surface in their infinite shades, cross the plates' whole thickness to recur in the back.



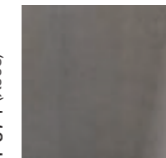
P069 (X004)



P072 (X007)



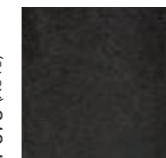
P074 (X008)



P071 (X005)



P075 (X010)



P073 (X009)



P070 (X006)

••• Cement

UHPFRC (ultra high-performance fibre reinforced cement) is a hi-tech product consisting of a cement paste of the latest generation with remarkable technical properties and virtually unlimited applications. The countless organic fibres that mix together with this paste in an apparently random and fortuitous way make up the strong binder which keeps this cement compact, yet incredibly elastic at the same time.



S036 (X080)



S038 (X081)

••• Laminate

Morematt interprets high-pressure stratified laminate in a new way. Compact and extra-thick, with mass coloration, it was developed to offer the finest characteristics that are typical of laminated products, with special emphasis on decorative appearance.



P056 (X079)



P085 (X078)



P055 (X077)

**art direction - style and coordination**

Francesco Bettoni and Marketing MDF Italia

**graphic layout** Giovanna Baderna

**photo** Studio Controluce

**printing** grafiche abi2ue srl • Sesto San Giovanni (MI)

June 2014

**www.mditalia.it**

for technical specs of the products

we invite you to visit our website

© Copyright 2014 MDF Italia spa con socio unico

all rights reserved

MDF Italia reserves the right to change,  
at any time and without prior warning,  
the technical specifications of  
any product illustrated in this catalogue.

**MDF Italia spa**

**con socio unico**

via morimondo 5/7

20143 milano

0039 02 81804100

showroom milano

via della chiusa

0039 02 58 317168

infomdf@mditalia.it

www.mditalia.it

