



© COPYRIGHT 2019 MDF ITALIA SRL SOCIETA' UNIPERSONALE

2016 - 2019

# TENSE MATERIAL

Designed by Piergiorgio Cazzaniga, Michele Cazzaniga

NOVELTIES 2019

An icon from MDF italia collection, TENSE TABLE, THIS YEAR CELEBRATES ITS 10TH ANNIVERSARY.

MDF Italia, to celebrate this anniversary, introduce THREE NEW FINISHES - Tense Diamond, Tense fine wood and white Carrara marble - that further enrich the Tense Material range.

The news does not end here. Throughout the Tense Collection, Tense Material and Tense Intarsia, there is the introduction of NEW SIZES AND FOUR NEW HEIGHTS (H35, H45, H90, H110 cm).

So, a real table system was created, divided into 5 categories according to five heights, in order to meet different market needs: low table, coffee table/bench, dining table/working table, console/high table/high working table, high table bar/office.

## TENSE MATERIAL

"A smart beauty, resulting from a thought and a know-how capable of transmitting a deep emotion through a wise accentuation of the peculiarities of the materials used".

That's how Piergiorgio Cazzaniga describes Tense Material table family, available in five finishes and capable of achieving big dimensions. Tense Material highlights the uniqueness of materials able to convey pure and deep emotions, which give the collection an exceptional transversal nature, that makes it fit for different spaces and lifestyles.

Every material stands out for its own hallmark.

In FINE WOOD finish, the designers aimed at combining the object's essentiality with the beauty of the material – walnut – by using different finishes, thus enabling the wood to express itself at best, enhancing its qualities and beauty, and arousing different emotions in the observer.

Tense DIAMOND was developed according to the ancient technique of Chinese lacquer; a process involving the manual drafting of the colour and the following application of four layers of appropriately polished transparent resin.

The MARBLE finish, rebuilt from marble powder, transmits an elegant brilliance and solidity; WOOD, particularly lived and wrinkled, also comes in the CARBONIZED finish in solid natural oak, thanks to a surface acid treatment,

got by using natural substances. BRASS, a smooth and rigorous material, recalls ancient gold. Last but not least, STONE, rebuilt with river sands, offers a natural and highly fascinating surface.

Whatever the chosen finish, Tense Material keeps top lightweight and stability, standing out for its unique and iconic features within MDF Italia collection.

[DOWNLOAD THE CATALOGUE TENSE TEN YEARS](#)

## NOVELTIES 2019

Today Tense, together with Tense Material and Tense Intarsia, comes in: 5 heights (H35, H45, H73, H90, H110), 36 sizes, 12 finishes, 170 types, MORE THAN 1500 variants. The table's simple style makes it versatile and cross-cutting for residential, public and working spaces.

### FINE WOOD | Italian walnut

Table made in Italian walnut, transparent acrylic finish. Edges and legs covered in 2 mm-thick cut walnut, processed with sawed effect (series of irregular cuts of different depths). Top covered in 2 mm-thick wood, fine smooth finish with variable slats which give the surface a distinctive array of shades, exalting the natural characteristics of the wood and raw material.

### DIAMOND | glossy red

Tense Diamond was developed according to the ancient technique of Chinese lacquer; a process involving the manual drafting of the colour and the following application of four layers of appropriately polished transparent resin. The material stratification process is based on a special mass-coloured concrete resin around 3 mm in thickness which is expertly combined with a binder and applied by hand all over the top in a deliberately irregular and non-uniform way.

The subsequent combination of the black patina, rough, dynamic and with lots of shadowy areas, and the surface finish consisting of various layers of polyester, extremely thick, smooth and very glossy, creates an original lens effect notable for its colour and depth.

Surface, edges and legs with application of 3 mm-thick material composed of a mass-coloured cement base and surface finish in glossy polyester.

### MARBLE

Marble, this particular finish, reconstructed marble, is made starting with marble dust that has been mixed with a filler and is then spread manually over the entire surface of the table.

Top, edges and legs are covered with a sheet of material in a thickness of about 3mm.

Finishes: black ebony and white Carrara marble.

## FRAME AND TABLETOPS

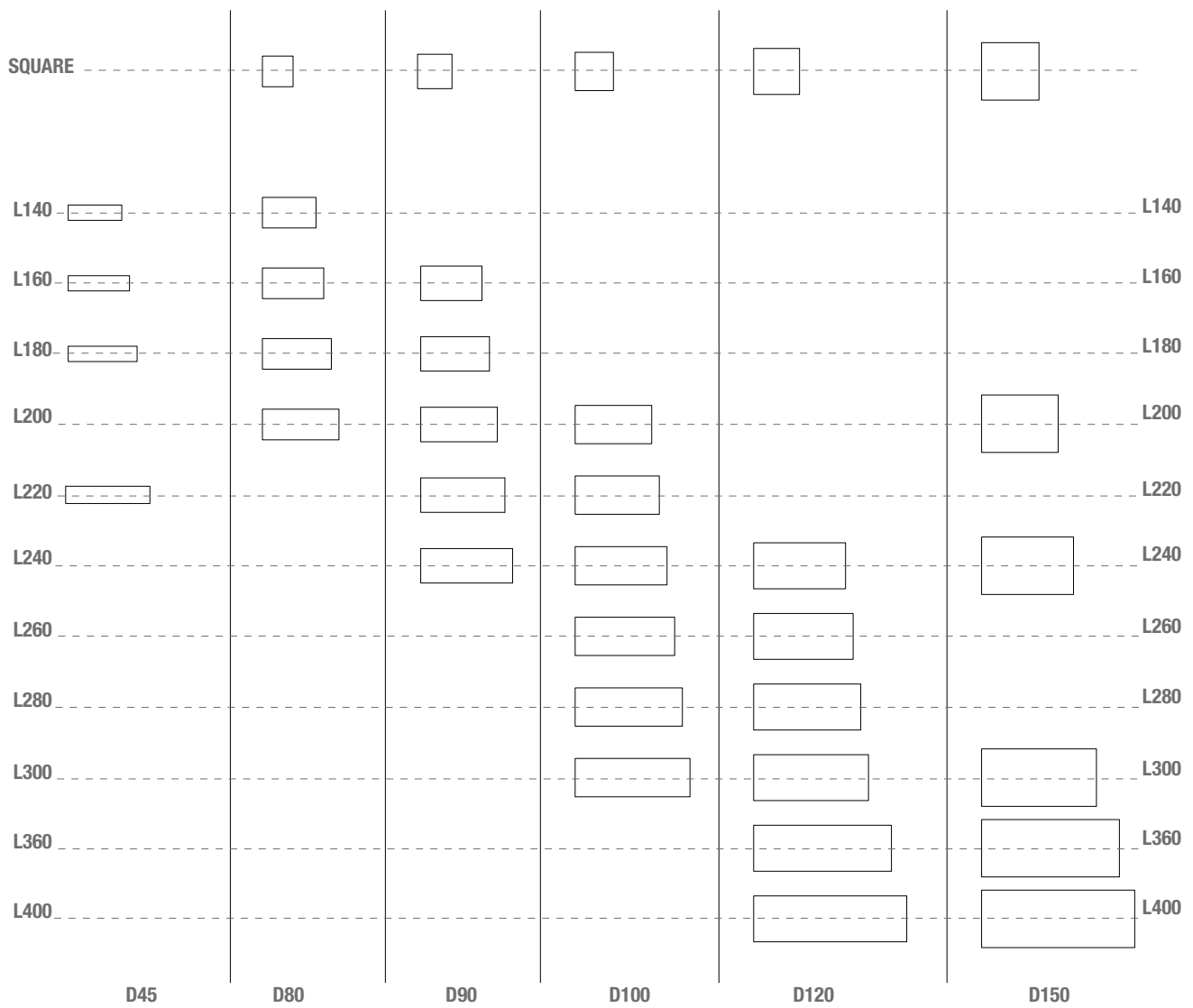
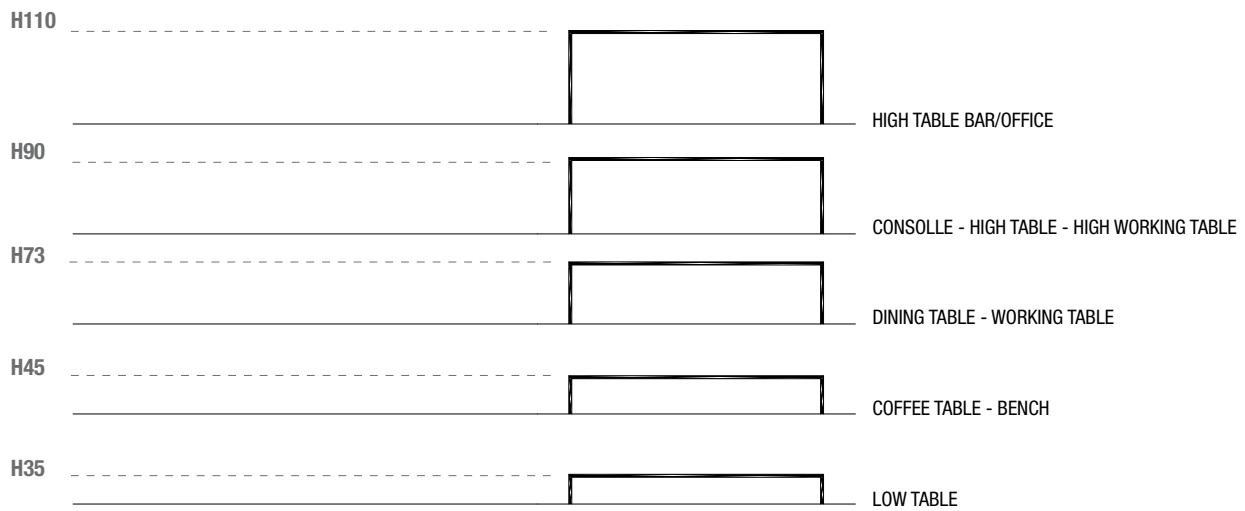
35 mm thick tabletop.

- Natural oak wood with transparent acrylic finish. Top, edges and legs coated by 3mm thick solid wood
- Stone, in reconstructed stone, transparent acrylic finish. Top, edges and legs coated with application of 3mm thick material.
- Brass, in brass plate, matt brushed finish and transparent acrylic cover. Top, edges and legs are coated with brass plate.
- Carbone: natural oak, carbonised black, transparent acrylic surface finish. Top, edges and legs coated with application of 3mm thick material.
- Ebano Black marble, in reconstructed marble. Top, edges and legs are covered with a sheet of material in a thickness of about 3 mm.

## ACCESSORIES

The table is also available in a version equipped with 1 or 2 openings and an undertop tray.

TENSE MATERIAL

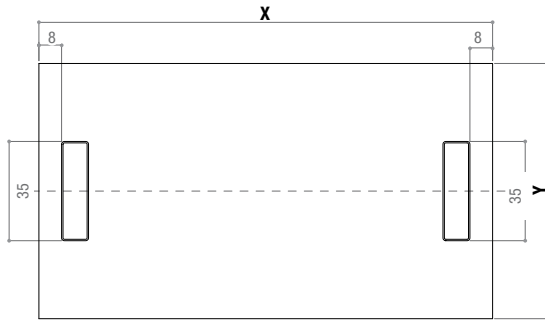


### CABLE MANAGEMENT DOOR POSITION

The cable management are not available for the brass version

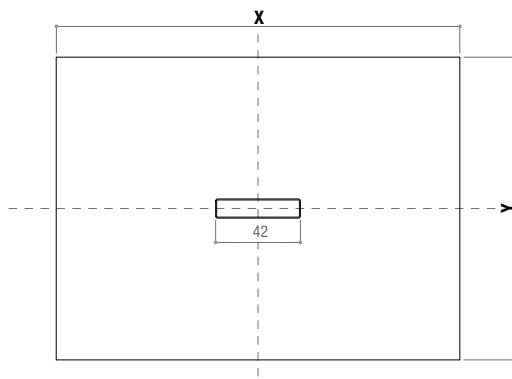
with one or two lateral openings for cable management in size 35 cm

X (cm)	Y (cm)
160	90
180	90
200	90
220	90
200	100
220	100



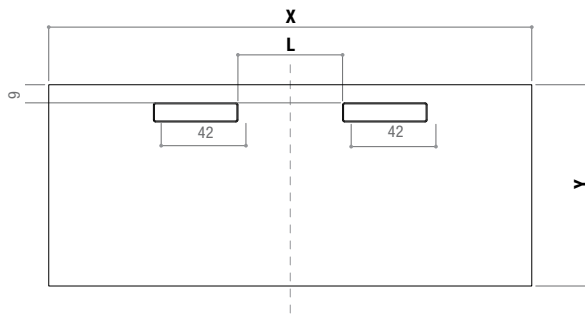
with one central opening for cable management in size 42 cm

X (cm)	Y (cm)
150	150
200	150
240	150



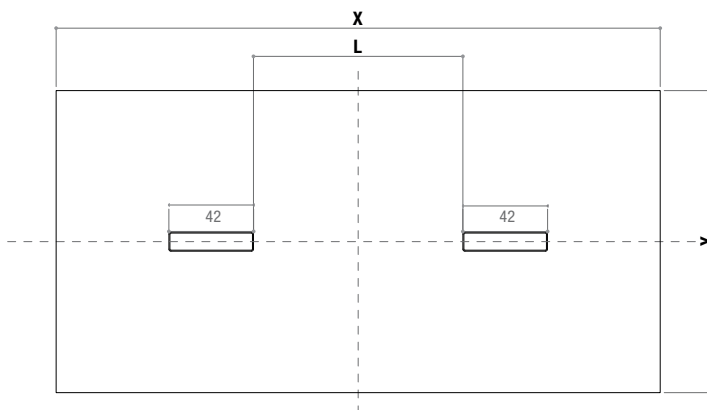
with two front openings for cable management in size 42 cm

X (cm)	Y (cm)	L (cm)
240	90	52
240	100	52
260	100	64
280	100	84
300	100	104
240	120	52
260	120	64
280	120	84
300	120	104
360	120	164
400	120	116



with two central openings for cable management in size 42 cm

X (cm)	Y (cm)	L (cm)
240	120	52
260	120	64
280	120	84
300	120	104
360	120	164
400	120	116
300	150	104
360	150	164
400	150	116



# Finishing

The number in the dot corresponds to the number of colour/material finish.

Here below, in the section FINISH OPTIONS, please note all the colours of the materials used for this product.

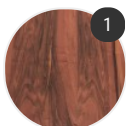
## TABLE

---

### Top/Structure



Diamond



Fine Wood



Wood



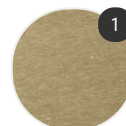
Carbone



Marble



Reconstructed stone



Brass

# Finish options

## TOP/STRUCTURE

---

### Diamond



Diamond,  
glossy red  
X121

### Fine Wood



Fine wood,  
Italian walnut  
X119

### Wood



Wood X085

### Carbone



Carbonised  
wood X094

### Marble



Reconstructed  
marble white  
Carrara X120



Reconstructed  
marble black  
ebony X111

## Reconstructed stone



reconstructed  
stone X084

## Brass



Brass X086