

mdf italia



© COPYRIGHT 2024 MDF ITALIA SRL SOCIETA' UNIPERSONALE

2022

OFFSET

Designed by Francesco Meda, David Lopez Quincoces

"This design aims to draw attention to the value of its materials and structural solutions, as well as the beauty these generate". Francesco Meda and David Lopez Quincoces.

The new Offset table designed by the Meda-Quincoces duo finds its poetic ethos in minimalism.

The protagonist of the design is the purity of the material used, a fundamental feature of the MDF Italia heritage: here it is brushed anodised aluminium.

The simplicity of the lines, carried to a wide range of sizes, including extra-large, combines lightness and a statement look in the chameleonic, universal style of an industrial material capable of blending seamlessly into various domestic and contract contexts.

The Offset table system is ideal for both indoor and outdoor use, and it is characterized by extreme flexibility. It can feature tops in various materials, such as back-painted glass, aluminium or glazed ceramic. A product that succeeds in being minimalist in design but also in its environmental impact: the flat pack allows a reduction in transport volumes, the materials used are 100% recyclable and easily disassembled to allow a proper recycling process.

[DISCOVER THE OUTDOOR VERSION](#)

DIMENSIONS

Tables H73 available in 21 different sizes.

TOPS

Tops are recessed and do not require any securing hardware. Available in:

BACK-PAINTED GLASS

Back-painted tempered glass in the colours dune (ral.1001), burgundy (ral.3007), English green (ral.6007), navy blue (ral.5004), black (ral.9005) and white. Thickness: 8 mm.

RECONSTRUCTED STONE

The top consists of sandblasted, tempered and spatulated glass slats in white calce, black slate, pink onyx, yellow onyx, sage green, brick red and pietra serena finishes. 9 mm thick.

STRUCTURE

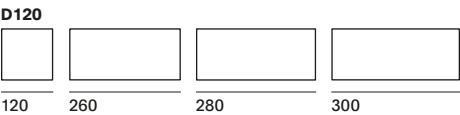
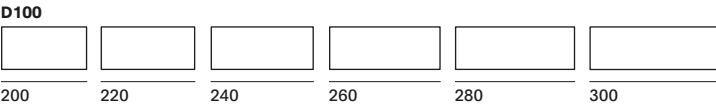
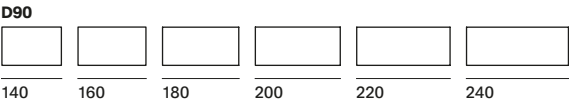
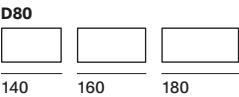
The frame is composed of only two extruded elements joined together fluidly by way of a high-precision mechanical processing method and sections that conceal the attachments.

Extruded aluminium legs, round section, diam. 40 mm, with internal steel structural tie-rod only for lengths over 260 cm. Extruded aluminium perimeter structure, height 40 mm. Available in the following finishes: brushed anodised aluminium or painted matt lead black.

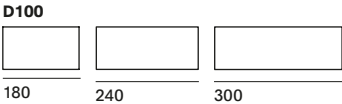
OUTDOOR VERSION

Tables with reconstructed stone tops can be used outdoors, in the dimensions D100 L180/240/300, D120 L120, D150 L150, D180 L180. Reconstructed stone tops are divided into several parts as shown in the drawing.

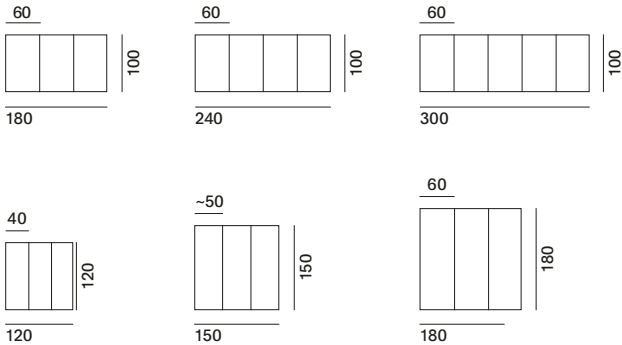
Indoor



Outdoor



Ceramic tops are divided into several parts.
Scheme of the ceramic tabletop partition.



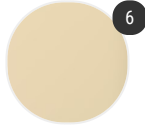
Finishing

The number in the dot corresponds to the number of colour/material finish.

Here below, in the section FINISH OPTIONS, please note all the colours of the materials used for this product.

TOP

Top



Back-painted glass



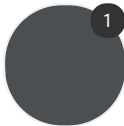
Reconstructed stone

STRUCTURE

Structure



Aluminium



Matt painted

Finish options

TOP

Back-painted glass



dune back-
painted glass
X141



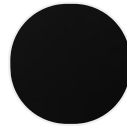
English green
back-painted
glass X143



navy blue
back-painted
glass X144



burgundy
back-painted
glass X142



black back-
painted glass
X012



white back-
painted glass
X139

Reconstructed stone



Reconstructed
stone white
Calce X131



Reconstructed
stone black
slate X132



Reconstructed
stone yellow
onyx X133



Reconstructed
stone pink
onyx X134



Reconstructed
stone Serena
X084



Reconstructed
stone brick
red X160
NEW!



Reconstructed
stone sage
green X161
NEW!

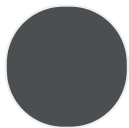
STRUCTURE

Aluminium



brushed
anodised
aluminium
X137

Matt painted



matt painted
lead black
X138