

mdf italia



© COPYRIGHT 2021 MDF ITALIA SRL SOCIETA' UNIPERSONALE

2013

LIM 3.0

Designed by Bruno Fattorini

Lim 3.0 by Metrica - design Bruno Fattorini.

Lim 3.0, a makeover of the LIM iconic family, renews and turns into a light and thin table, with a more up-to-date and modern identity. The structure contained in the sections can receive different colours to offer an alternative option to monochromatism and single material structure. The frame and the built-in top flush with the new and sophisticated surfaces (today used in architecture only) generate with LIM 3.0 a multi-purpose and chameleon collection which enhances all its features. Tops are built-into the frame and are available in white, black lacquered tempered glass; in matt ceramic corten; light grey or black calce, medium grey Pietra di Savoia (available from May 2021); Fenix in the matt variant in the following colours: white, black, medium grey and turtledove. Frame in matt lacquered version in white and graphite grey.

Only upon request, the tables are also available in the version equipped with 1 or 2 top-access and under top cable tray.

STRUCTURE

A table composed of top, legs and a perimeter frame in extruded aluminium, available in epoxy powder matt painted version in white and graphite grey shades. Legs in extruded aluminium, section 35x35 mm, with a standard central steel support bar. Perimeter frame in extruded aluminium, height 35 mm.

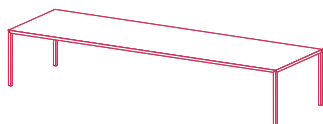
TOPS

Tops are built-into the frame and need no fittings. The tabletop is a composite panel made of central support in aluminium sections with resin-coated honeycomb filling and two layers, still in aluminium; such a technological innovation allows the top to reach important sizes, maintaining a perfect flatness and a considerable lightness.

TOP-ACCESS (UPON REQUEST)

The tables are also available in the version equipped with 1 or 2 top-access and under top cable tray. The metal cable trays are telescopic (H7/10 cm), to host various wiring systems, such multi-socket boxes, etc. wiring systems and electrical parts are not included. The steel cable spring (optional) can be inserted in the cable holes of the cable tray to lead the cables to the floor. The top-access is made of aluminium (size 127x350 mm) in three versions: single lead with soft closing and double lead. Finishes of the top-access: white and black painted, match with the colour of the frame of the table.

LIM 3.0



standard version

H72 and 75 cm

D80 L120, 140, 160

D90 L180, 200, 220, 240

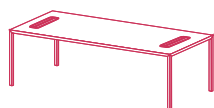
D100 L100, 200, 220, 240, 260, 280, 300

D120 L120, 300

D140 L140

D150 L150

LIM 3.0 - TOP-ACCESS VERSION (only upon request)

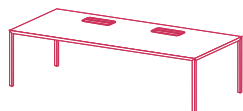


with one or two lateral openings for cable management in size 35 cm

H72 and 75 cm

D90 L180, 200, 220, 240

D100 L200, 220, 240, 260

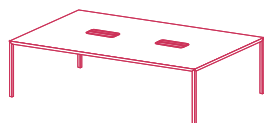


with two front openings for cable management in size 42 cm

H72 and 75 cm

D100 L200, 220, 240, 260, 280, 300

D120 L300



with two central openings for cable management in size 42 cm

H72 and 75 cm

D100 L200, 220, 240, 260, 280, 300

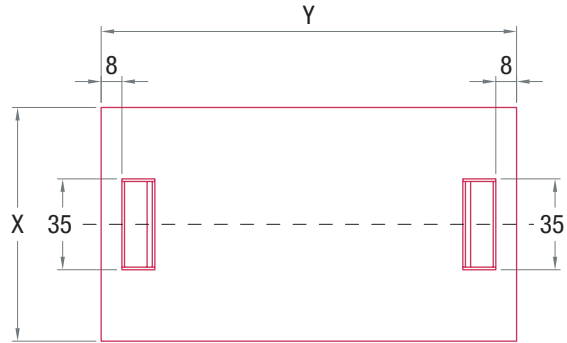
D120 L300

LIM 3.0

CABLE MANAGEMENT DOOR POSITION

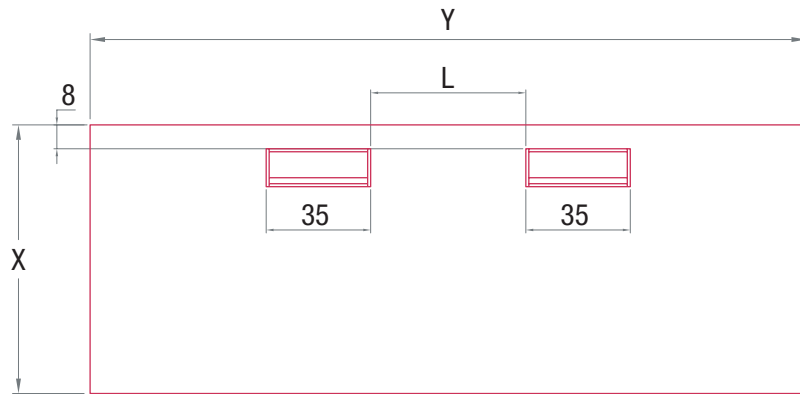
With one or two lateral top-access

| X (cm) | Y (cm) |
|--------|--------|
| 90 | 180 |
| 90 | 200 |
| 90 | 220 |
| 90 | 240 |
| 100 | 200 |
| 100 | 220 |
| 100 | 240 |
| 100 | 260 |



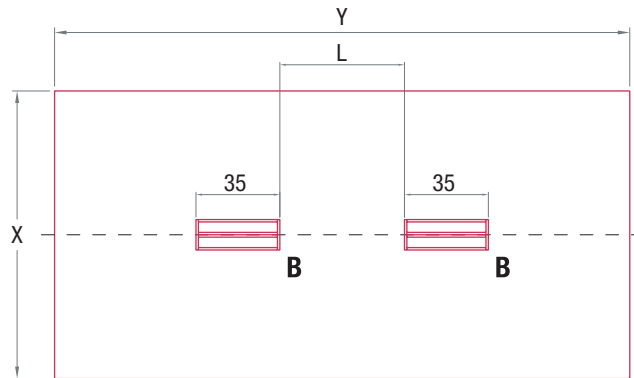
With two front top-access

| X (cm) | Y (cm) | L (cm) |
|--------|--------|--------|
| 100 | 200 | 50 |
| 100 | 220 | 50 |
| 100 | 240 | 50 |
| 100 | 260 | 70 |
| 100 | 280 | 70 |
| 100 | 300 | 70 |
| 120 | 300 | 70 |



With two central top-access

| X (cm) | Y (cm) | L (cm) |
|--------|--------|--------|
| 100 | 200 | 50 |
| 100 | 220 | 50 |
| 100 | 240 | 50 |
| 100 | 260 | 70 |
| 100 | 280 | 70 |
| 100 | 300 | 70 |
| 120 | 300 | 70 |



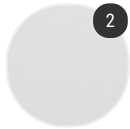
Finishing

The number in the dot corresponds to the number of colour/material finish.

Here below, in the section FINISH OPTIONS, please note all the colours of the materials used for this product.

TABLE

Top



Glass

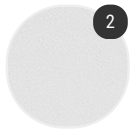


Fenix



Ceramic

Structure

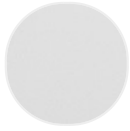


Matt painted

Finish options

TOP

Glass



Lacquered
glass white
X011

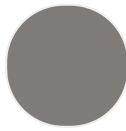


Lacquered
glass black
X012

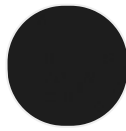
Fenix



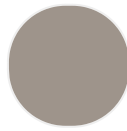
Fenix matt
white X020



Fenix matt
medium grey
X021



Fenix matt
black X022



Fenix matt
turtledove
X023

Ceramic



Ceramic matt
corten X010



Light grey
calce



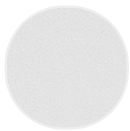
Black calce



Medium grey
pietra di
Savoia

STRUCTURE

Matt painted



Matt painted
white X053



Matt painted
graphite grey
X054