

mdf italia



© COPYRIGHT 2020 MDF ITALIA SRL SOCIETA' UNIPERSONALE

2020

ARPA

Designed by Ramón Esteve

INDOOR AND OUTDOOR SOFA, ARMCHAIR AND SIDE TABLE

As its name implies, ARPA Collection is inspired by the harp, one of the most beautiful and mesmerizing musical instruments. Unlike the meticulous work involved in manufacturing a harp, in designing this collection, rigorous paring down was applied, resolving each piece with the least possible number of elements.

ARPA collection combines the stability of the orthogonal external shape with the softness and comfort of the inner cushion shell. The thin strings add elegance and fineness to every piece, giving a special sense of lightness, as if the whole cushion mass was hanging from the structure.

Designed to be timeless, ARPA aims to become an icon, not only for aesthetical reasons, but also for its functionality and comfort.

[DOWNLOAD CATALOGUE](#)

STRUCTURE

Backrest and seat loadbearing structure in stainless steel, 2 x 2 cm section, epoxy powder coated using specific treatment for outdoor use. The seat frame has elastic straps, specifically for outdoor use.

The backrest frame is woven by hand using high tensile polyester cord, in mass pigmented colour, able to guarantee high resistance to weather, abrasion, limited elongation, and colour fastness. The seats are made with original, exclusive weaving.

The structure of the side table is the same of the armchair/sofa. Top made of fine porcelain stoneware laminate, matt variations in light grey calce or black calce.

Bush hammered medium grey pietra di Savoia, and natural satin-finished corten.

Arpa collection is available in a range of four colours.

CUSHIONS AND COVERING

The back and seat cushions are made of Dryfeel (draining polyurethane) of varied densities, wrapped in siliconed hollow fibre bound in polyester, that will not rot, does not cause suffocation, and is antibacterial, while the final cover is in 100% polyester Tecnostrong.

This particular composition of the cushion gives the padding natural softness and elasticity, a long lifespan and great comfort. The upholstery fabric is completely removable.

OUTDOOR COVERING TARPAULIN

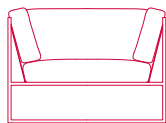
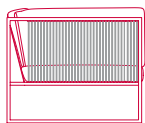
Protective tarpaulin specifically for outdoor products, waterproof, made of 100% polyester, outside with acrylic coating, inside with acrylic resin coating.

Its characteristics are emphasised by its fully fungicidal Teflon finish. Each tarpaulin comes with a closable slip cover, so that it can be folded and kept correctly when not in use.

ARPA

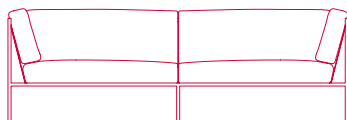
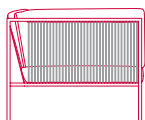


ARMCHAIR



L102 D87 H70 cm
seat H46 D60 cm

SOFA 3S



L220 D87 H70 cm
seat H46 D60 cm

SIDE TABLE



L87 D87 H27

Finishing

The number in the dot corresponds to the number of colour/material finish.

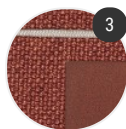
Here below, in the section FINISH OPTIONS, please note all the colours of the materials used for this product.

ARMCHAIR AND SOFA

Structure



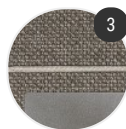
White match



Corten match



Iron black match



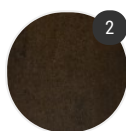
Pewter match

SIDE TABLES

Structure



White match



Corten match



Iron black match



Pewter match

Finish options

STRUCTURE

White match



Covers in
Ramiro ecru
R550



Cord matt
anthracite
grey



Structure
matt white
goffered
painted X124

Corten match



Covers in
Ramiro dark
orange R553



Cord matt
ecru grey



Structure
matt corten
goffered
painted X128

Iron black match



Covers in
Ramiro
titanium R551



Cord matt
anthracite
grey



Structure
black iron
goffered
painted X130

Pewter match



Covers in
Ramiro
pewter R552



Cord matt
ecru grey



Structure
matt pewter
goffered
painted X129

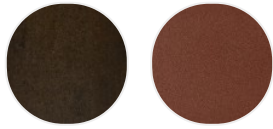
White match



Top in matt
light grey
calce
ceramic

Structure in
matt white
goffered
painted X124

Corten match



Corten
ceramic top
X010

Structure
matt corten
goffered
painted X128

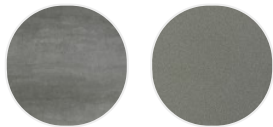
Iron black match



Top in matt
black calce
ceramic

Structure in
black iron
goffered
painted X130

Pewter match



Top in matt
medium grey
pietra di
Savoia
ceramic

Structure
matt pewter
goffered
painted X129