

Tense Material stone

Designer	Piergiorgio Cazzaniga, Michele Cazzaniga
Year	2016-2019



Tense Material Stone combines the signature lightness of the Tense collection with the authentic character of a reconstructed stone finish. The manual application of a mineral blend of marble and quartz across the entire surface adds exclusivity to the tables designed by Piergiorgio and Michele Cazzaniga. Their minimalist design and elegant silhouette make them suitable for any setting and style, from classic to modern and contemporary.

The natural variations in the stone finish, created by blending different minerals, make each table truly unique and highlight its high-quality craftsmanship. At the same time, the smooth and soft texture provides a pleasant tactile experience.

With a wide range of sizes and the option to customise the table by adding up to two top-access units and an under-surface cable tray, Tense Material Stone is ideal for a variety of uses, including work activities, easily transforming into a desk or workstation when needed.

Frame

Steel legs with a 35x35 mm section and internal structural tie-rod. The 35 mm thick tabletop is a load-bearing composite board built with an internal frame consisting of either aluminium profile and polystyrene filler.

Reconstructed stone

Textured finish obtained from a blend of mineral powders that have been micronised and mixed with liquid acrylic and water-based products, giving it a material essence. The finishes are applied manually with a palette knife over the entire surface of the table, followed by a maturation process at room temperature. The material is subsequently protected with a water-based nanotechnological finish that makes the table sturdy and easy to clean. Top, edges and legs covered with the application of a thickness of about 1.5 mm of material.

Reconstructed stone note: visual irregularities, nuances, a lack of uniformity of both surface and material colour are deemed traits of value and uniqueness.

Finish in Coccioperla white X202, cream X203, dove grey X204 and black X205 on request.

Top-access

The tables are also available in the version equipped with 1 or 2 top-access and under top cable tray. The top-access is available in three versions: single lead with soft closing, double lead or optional, the single lead with soft closing, with inlay in the same finish of the table. The metal cable trays are telescopic (H7/H10 cm), to host various wiring systems.

Tense Material stone finishes

Top/Structure

Reconstructed stone

Reconstructed stone Serena X084

Reconstructed stone white calce X131

Reconstructed stone black slate X132

Reconstructed stone yellow onyx X133

Reconstructed stone pink onyx X134

Reconstructed stone red brick X160

Reconstructed stone sage green X161

Tense Material stone dimensions

H110		high table bar/office
H90		high table, high working table
H73		dining table, working table
H45		coffee table
H35		low table

D80

140	160

D90

180	200	220	240

D100

100	200	220	240	260	280	300

D120

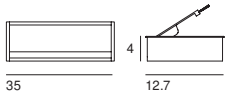
120	240	260	280	300	360	400

D150

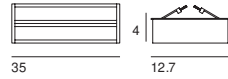
150	200	240	300	360	400

Top-access

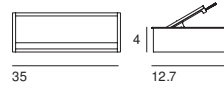
Single lead with soft closing
(version A)



Double lead (version B)

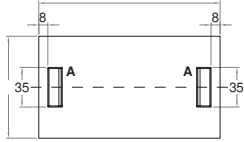


Single lead with soft closing, with
inlay matching with the finish of the
table (C version).

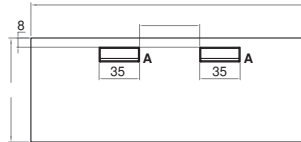


Position of the top-access

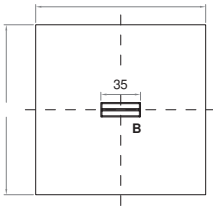
With one or two lateral top-access



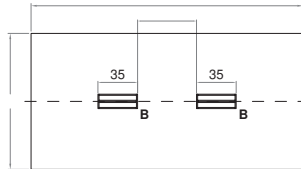
With two front top-access



With one central top-access

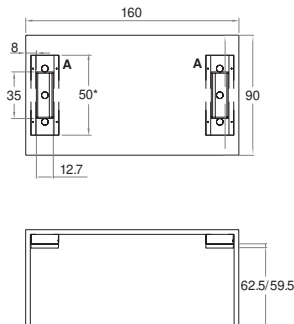


With two central top-access



Example of top-access and metal wireway position

With one or two lateral top-access
*L60 for tables greater than D90



With two front top-access

